

Morpheus Release Notes v 1.09

The following document outlines the changes introduced into Sanguin Morpheus v1.09 since version 1.8

CONTENTS

- Update 2**

- PROBLEM FIXES 3**
 - Template Assistant 3
 - Script Assistant 3
 - Scheduler 3
 - Port Monitor 3

- NEW FEATURES 4**
 - All modules..... 4
 - Port Monitor 4
 - Script Assistant 4
 - Template Assistant 4
 - Script Library..... 4

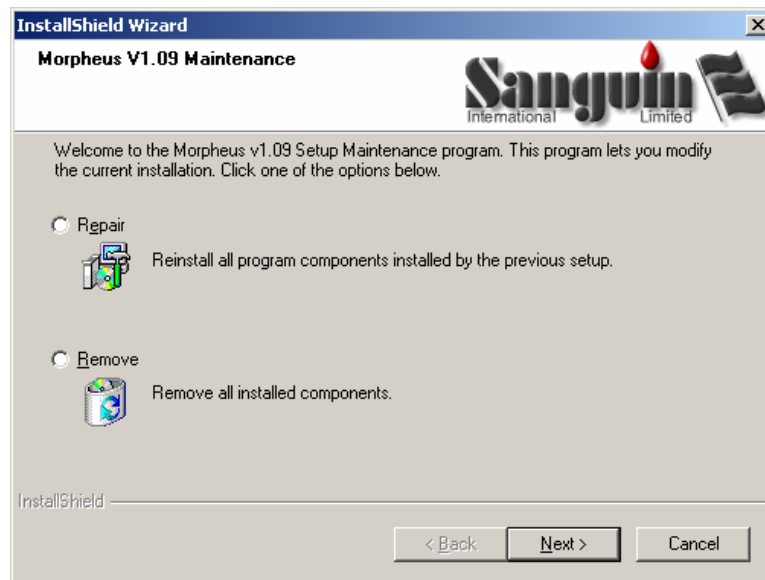
- CE marking..... 5**

Morpheus Release Notes v 1.09

Update

Load the CD into the PC and if the installation does not autostart then select Setup on the CD from either 'My Computer', 'Explorer' or [Start – Run – Browse](#).

Select the Repair option to perform the update.



YOU WILL NOT LOSE ANY PREVIOUS SCRIPTS OR EVENTS.

After installation Morpheus may be used as previously.

Morpheus Release Notes v 1.09

PROBLEM FIXES

The following problems have been resolved:

Template Assistant

1. A number of buttons were highlighted when they shouldn't have been suggesting they were active.
2. A number of spelling mistakes have been corrected.
3. The ASCII file types have their "Right Margin" set wrong in the smart selector tool.

Script Assistant

1. The SQL selection box now has a free text entry for a name of a server; this is a work around for networks that do not support the NetBIOS transmission of active SQL Server Data.
2. A number of buttons were highlighted when they shouldn't have been suggesting they were active.
3. A number of spelling mistakes have been corrected.
4. Attempting to save a blank script caused a 'Script Assistant' Lock problem.
5. Large scripts now colour much quicker and do not flicker.
6. The resizable areas of the screen can only be resized between 15% and 85% of the screen height and width.
7. Script now displays {} correctly when inside quotes.
8. ODBC now allows any hierarchy of data to be used

Scheduler

1. A number of buttons were highlighted when they shouldn't have been suggesting they were active.
2. A number of spelling mistakes have been corrected.

Port Monitor

1. A number of buttons were highlighted when they shouldn't have been suggesting they were active.
2. The Wizard did not allow for the COM port settings.
3. Inconsistencies in terminology within Port Monitor have been corrected.
4. Paths and file information was lost when changing modes.
5. The TCP/IP port settings can now be configured correctly.
6. The "Flow Control" combo box selection from the Com Port settings screen does not retain its data.

Morpheus Release Notes v 1.09

NEW FEATURES

All modules

All application modules used to load centred on the display. They may now be moved, maximised or minimised and the settings will be retained for the next time the application loads.

Port Monitor

No additions

Script Assistant

Script Assistant has an additional Menu item under 'Tools' that will automatically re-format your script, it will also error check the script at the same time and inform you of any incorrectly formatted code.

Template Assistant

There are no new features in Template Assistant.

Script Library

An addition to the Script Library provides a method to output data directly to a printer. This typically may be used for Error reporting or as an alternative output destination. Data is sent directly to a printer and does not utilise the Windows drivers, however if your printer supports a printer Language (e.g. Epson, HP, Kyocera) then any format of report can be created.

```
Sub Main
    output.addline "Test"
    PrintData True
End Sub

Sub PrintData(PersistData)
    '*****
    '*      Basic Printing for Morpheus                      *
    '*                                           *
    '*                                           *
    '*      PersistData Parameter allows the data to be reused *
    '*                                           *
    '*      Drive must be Captured using net use                *
    '*      i.e. net use lpt1 \\svrpd\dev_p                    *
    '*      This is achieved from the command prompt (DOS prompt) *
    '*****
    Dim strData
    strdata = Output.Fullstring
    output.addline Chr(12) 'This is required to create a Page feed a the end
    Output.outputpath = ""
    output.savefile "LPT1",True
    If Cbool(PersistData) = True Then
        Output.Fullstring = strdata
    End If
End Sub
```

Morpheus Release Notes v 1.09

CE marking

Version 1.09 will be issued as CE marked as it is compliance of the **Directive 98/79/EC on In Vitro Diagnostic Medical Devices and the UK IVD Regulations 2000**. It is registered with the UK Medicines and Healthcare products Regulatory Agency (MHRA) – the competent authority for the UK under the Registration number **IVD 000079**